

ATTENTION!

READ THIS BEFORE USING THE INSTRUMENT!

Quick Start Guide For SaMag-96

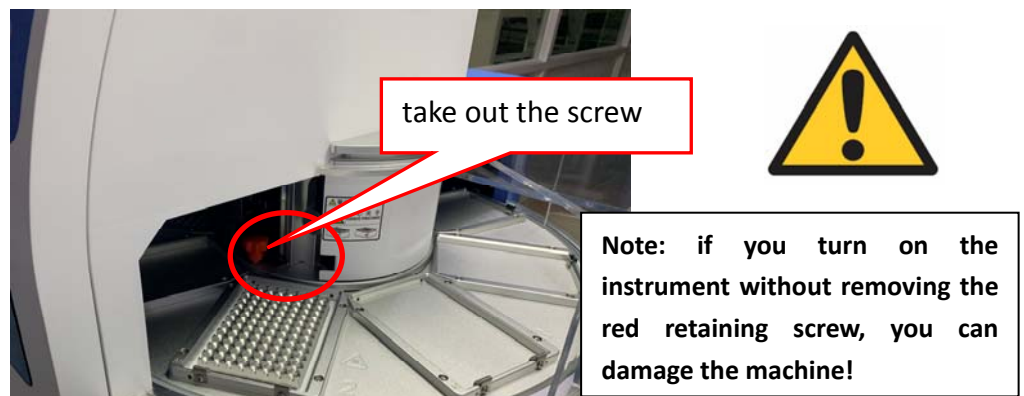
- ◆ This guide does not replace the Operation Manual. It is necessary to read the Operation Manual before using the instrument. www.sacace.com/support.htm
- ◆ Check and confirm the voltage requirements before using.

1 Remove transport packaging and security screw / belt

- ① Take out the instrument from packing carton and remove the tape from the transparent window.



- ② Open the transparent window to unscrew and take out the red retaining screw.



- ③ Open the door and use scissors to VERY CAREFULLY cut the retaining belt of the baffle plate.



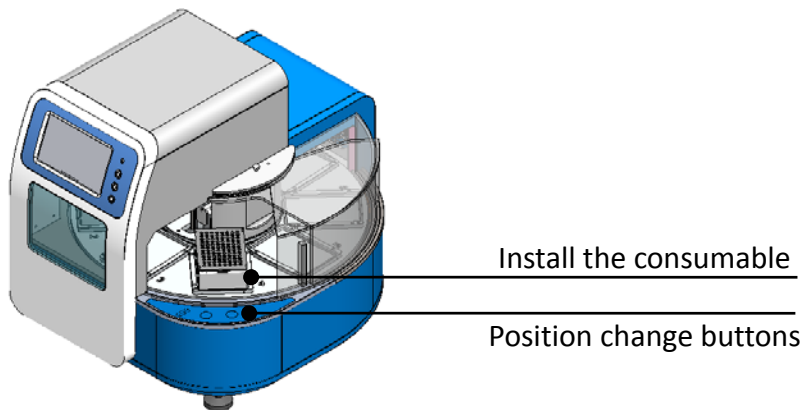
Note: Be extremely careful in operating process otherwise the magnetic rod could be damaged.

2 Connect the power

Connect one end of the power cord to the power socket on the back of the instrument and the other end to an AC power socket(AC 100-240V), then turn on the power switch.

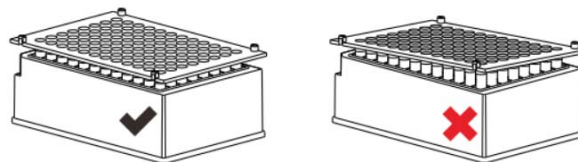
3 Install magnetic rod tip (sleeve) and the reagent plate

Open the transparent cover and place the reagent plate with the magnetic rod tip (sleeve) on the rotary platform. The instrument will automatically install magnetic rod tip (sleeve) after running the program. Please note the software uses as default the position 1 for the magnetic rod tip (sleeve). (Procedural step '-Load-' is installing the magnetic rod tip platform. '-Unload-' is uninstalling the magnetic rod tip platform)



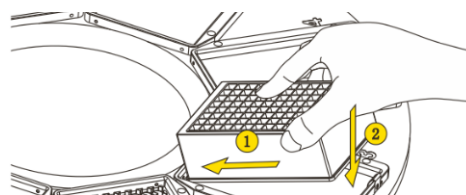
① Place the magnetic rod tip comb (sleeve)

The magnetic rod tip comb must be placed flat or it may cause automatic installation failure and damage the instrument, please refer to the figure below.



② Place the reagent plate

First, place the inside of the plate down to the bottom. Second, push the outside down to the bottom. Make sure the plate is flat and in the right place, or will cause instrument operation error. As shown in the figure below.



4 Operation

Regarding to running details, setting and operation, please refer to Operation Manual.